

Magnetic structure of an incommensurate phase of La-doped $\text{BiFe}_{0.5}\text{Sc}_{0.5}\text{O}_3$: Role of antisymmetric exchange interactions

D. D. Khalyavin,^{1,*} A. N. Salak,^{2,†} A. B. Lopes,² N. M. Olekhovich,³ A. V. Pushkarev,³ Yu. V. Radyush,³ E. L. Fertman,⁴
V. A. Desnenko,⁴ A. V. Fedorchenko,⁴ P. Manuel,¹ A. Feher,⁵ J. M. Vieira,² and M. G. S. Ferreira²

¹ISIS Facility, STFC, Rutherford Appleton Laboratory, Chilton, Didcot, Oxfordshire, OX11-0QX, United Kingdom

²Department of Materials and Ceramic Engineering/CICECO, University of Aveiro, 3810-193 Aveiro, Portugal

³Scientific-Practical Materials Research Centre of National Academy of Science of Belarus, Minsk, 220072, Belarus

⁴B. Verkin Institute for Low Temperature Physics and Engineering of National Academy of Science of Ukraine, Kharkov, 61103, Ukraine

⁵Faculty of Science, P. J. Šafárik University in Košice, Košice, 04154, Slovakia

(Received 8 April 2015; revised manuscript received 14 October 2015; published 23 December 2015)

A 20% substitution of Bi with La in the perovskite $\text{Bi}_{1-x}\text{La}_x\text{Fe}_{0.5}\text{Sc}_{0.5}\text{O}_3$ system obtained under high-pressure and high-temperature conditions has been found to induce an incommensurately modulated structural phase. The room-temperature x-ray and neutron powder diffraction patterns of this phase were successfully refined using the $Imma(0,0,\gamma)s00$ superspace group ($\gamma = 0.534(3)$) with the modulation applied to Bi/La and oxygen displacements. The modulated structure is closely related to the prototype antiferroelectric structure of PbZrO_3 which can be considered as the lock-in variant of the latter with $\gamma = 0.5$. Below $T_N \sim 220$ K, the neutron diffraction data provide evidence for a long-range G -type antiferromagnetic ordering commensurate with the average $Imma$ structure. Based on a general symmetry consideration, we show that the direction of the spins is controlled by the antisymmetric exchange imposed by the two primary structural distortions, namely oxygen octahedral tilting and incommensurate atomic displacements. The tilting is responsible for the onset of a weak ferromagnetism, observed in magnetization measurements, whereas the incommensurate displacive mode is dictated by the symmetry to couple a spin-density wave. The obtained results demonstrate that antisymmetric exchange is the dominant anisotropic interaction in Fe^{3+} -based distorted perovskites with a nearly quenched orbital degree of freedom.

DOI: [10.1103/PhysRevB.92.224428](https://doi.org/10.1103/PhysRevB.92.224428)

PACS number(s): 75.25.-j

I. INTRODUCTION

Perovskite materials derived from the well-known multiferroic BiFeO_3 by various substitutions exhibit a variety of structural phases with interesting properties and improved functionality [1–12]. The electronic degree of freedom related to the lone pair nature of Bi^{3+} usually results in polar/antipolar atomic displacements in these materials. The displacements are often coupled to oxygen octahedral tilting. Both types of distortions define the symmetry of the perovskite lattice and control electric and magnetic properties as well as a cross-coupling between them. The energy landscape of some Bi-containing compositions consists of several almost degenerate phase states that can be switched by relatively small perturbations [12–16]. This offers a unique opportunity to study the structure-properties relationship using distinct structural modifications of the same material. It has been recently shown that the metastable perovskite $\text{BiFe}_{0.5}\text{Sc}_{0.5}\text{O}_3$ can be stabilized in two different polymorphs via an irreversible behavior under heating/cooling thermal cycling [17]. As-prepared $\text{BiFe}_{0.5}\text{Sc}_{0.5}\text{O}_3$ ceramics obtained by quenching under high pressure were characterized by a complex antipolar structure with the $Pnma$ symmetry and the $\sqrt{2}a_p \times 4a_p \times 2\sqrt{2}a_p$ type superstructure (a_p is the pseudocubic unit cell). Hereafter we use p subscript to denote the pseudocubic setting. The ground-state atomic configuration, however, could not be

deduced unambiguously based on the experimental data due to existence of two nonequivalent $Pnma$ isotropy subgroups different by the origin choice and indistinguishable in the refinement procedure. This configuration was determined theoretically using state-of-the-art density functional algorithms for structure relaxation [18]. On heating, the antipolar $Pnma$ phase of $\text{BiFe}_{0.5}\text{Sc}_{0.5}\text{O}_3$ was found to transform into the polar $R3c$ phase identical to that of BiFeO_3 . Subsequent cooling below the transition temperature resulted in onset of a polar phase with the $Ima2$ symmetry, where the ferroelectric-like displacements of Bi^{3+} cations along the $[110]_p$ pseudocubic direction are combined with the antiphase octahedral tilting about the polar axis [17]. It has also been shown that both the $Pnma$ and the $Ima2$ polymorphs of $\text{BiFe}_{0.5}\text{Sc}_{0.5}\text{O}_3$ exhibit a long-range antiferromagnetic ordering with a weak ferromagnetic component below about 220 K. The antiferromagnetic configuration was found to be of a G type (where the Fe/Sc nearest neighbors in all three directions have antiparallel spins).

The antipolar $Pnma$ modification of $\text{BiFe}_{0.5}\text{Sc}_{0.5}\text{O}_3$ is isostructural to one of the phases of La-doped BiFeO_3 , as reported by Rusakov *et al.* [19]. In the $\text{Bi}_{1-x}\text{La}_x\text{FeO}_3$ system, the $Pnma$ phase has been found to be stable in a narrow compositional range and an increase of the La content above $x \sim 0.19$ induced an incommensurate modulation. Based on these observations, one can expect that the antipolar modification of $\text{BiFe}_{0.5}\text{Sc}_{0.5}\text{O}_3$ can also be driven to the incommensurately modulated structure by a partial substitution of Bi with La. Indeed, our present study has revealed signs of an incommensurate modulation in the

*dmitry.khalyavin@stfc.ac.uk

†salak@ua.pt

perovskite phase of the $\text{Bi}_{0.8}\text{La}_{0.2}\text{Fe}_{0.5}\text{Sc}_{0.5}\text{O}_3$ composition. In this work, comprehensive structural and magnetic studies of the incommensurate phase have been performed. The main goal was to explore how the structural modulation affects the spin ordering in the system. Data of the magnetization measurements and the neutron diffraction experiments were analyzed based on the symmetry considerations. We conclude that the magnetic structure of such a phase is a unique example, where a dominant commensurate antiferromagnetic component coexists with a macroscopic ferromagnetism and an incommensurate spin density wave that has a propagation vector related to the structural modulation. The coupling mechanism has been suggested to be the antisymmetric Dzyaloshinskii-Moriya exchange which also fully defines the spin directions in the structure.

II. EXPERIMENTAL SECTION

High-purity oxides Bi_2O_3 , La_2O_3 , Fe_2O_3 , and Sc_2O_3 were used as starting reagents to prepare the compositions of the $\text{Bi}_{1-x}\text{La}_x\text{Fe}_{0.5}\text{Sc}_{0.5}\text{O}_3$ series. Previously calcined oxides were mixed in the stoichiometric ratio, ball milled in acetone, dried, and pressed into pellets. The pellets were heated in a closed alumina crucible at 1140 K for 10 min and then quenched to room temperature. The obtained material served as a precursor for the high-pressure synthesis. The pressure was generated using an anvil press DO-138A with a press capacity up to 6300 kN. In order to avoid penetration of graphite from the tubular heater to the sample, a protective screen of molybdenum foil was used. The samples were synthesized at 6 GPa and 1500–1600 K. The high-pressure treatment time did not exceed 5 min.

An x-ray diffraction study of the powdered samples was performed using a PANalytical XPert MPD PRO diffractometer (Ni-filtered Cu K_α radiation, tube power 45 kV, 40 mA; PIXEL detector, and the exposition corresponded to about 2 s per step of 0.02° over the angular range $15\text{--}100^\circ$) at room temperature.

Electron diffraction patterns of the samples were recorded using a 200 kV JEOL 2200FS transmission electron microscope (TEM). The samples were crushed and milled with mortar and pestle. The obtained fine powder was dispersed in ethanol and deposited on a TEM grid.

Neutron powder diffraction data for the $\text{Bi}_{0.8}\text{La}_{0.2}\text{Fe}_{0.5}\text{Sc}_{0.5}\text{O}_3$ composition were collected at the ISIS pulsed neutron and muon facility of the Rutherford Appleton Laboratory (UK), on the WISH diffractometer located at the second target station [20]. The sample (~ 25 mg) was loaded into a cylindrical 3-mm-diameter vanadium can and measured in the temperature range of 1.5–300 K (step 30 K, exposition time 2 h) using an Oxford Instrument cryostat. Rietveld refinements of the crystal and magnetic structures were performed using the JANA2006 program [21] against the data measured in detector banks at average 2θ values of 58° , 90° , 122° , and 154° , each covering 32° of the scattering plane. Group-theoretical calculations were done using ISOTROPY [22], ISODISTORT [23], and Bilbao Crystallographic Server software (REPRES [24] and MAGNETIC SYMMETRY AND APPLICATIONS [25]).

Magnetization data were measured using a superconducting quantum interference device (SQUID) magnetometer (Quantum Design MPMS).

III. RESULT AND DISCUSSION

A. Crystal structure

It was found from the obtained room temperature x-ray and neutron diffraction data that the crystal structure of $\text{Bi}_{0.8}\text{La}_{0.2}\text{Fe}_{0.5}\text{Sc}_{0.5}\text{O}_3$ is different from the orthorhombic $Pnma$ structure of undoped $\text{BiFe}_{0.5}\text{Sc}_{0.5}\text{O}_3$, indicating a compositionally driven phase transition. The indexation procedure of the powder diffraction patterns appeared to be difficult using a reasonable size superstructure. Taking into account that about the same concentration of La has been reported by Rusakov *et al.* [19] to induce an incommensurate phase in the $\text{Bi}_{1-x}\text{La}_x\text{FeO}_3$ system, an electron diffraction on $\text{Bi}_{0.8}\text{La}_{0.2}\text{Fe}_{0.5}\text{Sc}_{0.5}\text{O}_3$ has been performed. The measurements confirmed the presence of an incommensurate modulation with the propagation vector $k_p^\Sigma = (\alpha, \alpha, 0; \alpha \sim 0.27)$ with respect to the cubic perovskite unit cell (Fig. 1). This propagation vector is the Σ line of symmetry, following the ISOTROPY notations [22,23], and the associated distortion is present in the antiferroelectric structures of the undoped $\text{BiFe}_{0.5}\text{Sc}_{0.5}\text{O}_3$ as well as in the closely related $Pbma$ structure of PbZrO_3 (Σ_2 distortions) [26]. In both cases, the parameter α takes the commensurate value of $1/4$ and therefore these antiferroelectric structures can be regarded as the lock-in phases. Since the value of $1/4$ is not stimulated by symmetry, it can be changed by either external perturbations or changes in chemical composition.

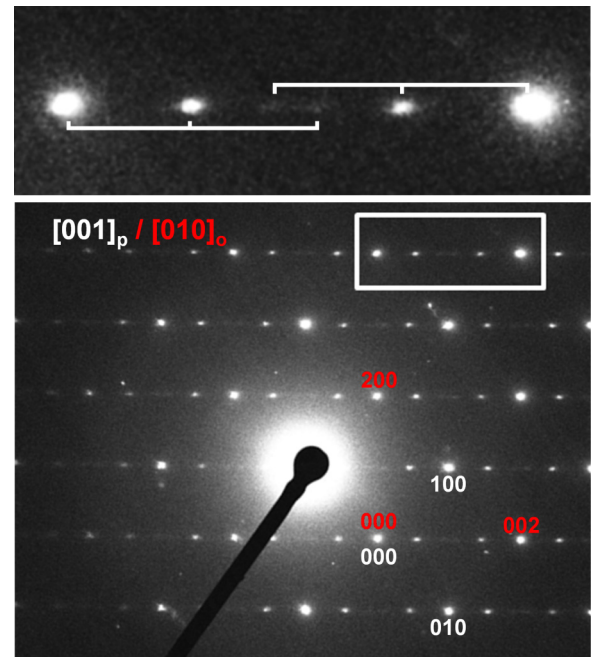


FIG. 1. (Color online) Electron diffraction pattern of the incommensurately modulated phase of $\text{Bi}_{0.8}\text{La}_{0.2}\text{Fe}_{0.5}\text{Sc}_{0.5}\text{O}_3$. Indexation of the fundamental spots is done in both pseudocubic (white) and the average orthorhombic (red [gray]) cells. The enlarged part of the diffraction pattern (on the top) demonstrates nonoverlapping second-order satellites.

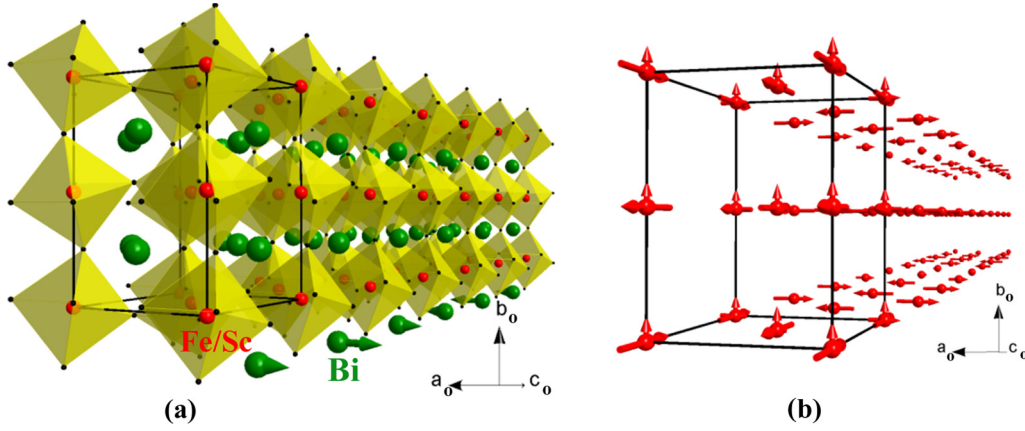


FIG. 2. (Color online) Crystal (a) and magnetic (b) structures of $\text{Bi}_{0.8}\text{La}_{0.2}\text{Fe}_{0.5}\text{Sc}_{0.5}\text{O}_3$. The crystal structure involves incommensurate atomic displacements (mainly Bi and oxygen as follows from the quantitative structure refinement) along the a_o axis, combined with antiphase octahedral tilting about this direction. Arrows indicate the incommensurate displacements of Bi (shown only for one Bi chain for clarity). The magnetic structure combines the primary antiferromagnetic component G_z commensurate with the average structure and two secondary ones, namely the commensurate weak ferromagnetic F_y and the incommensurate spin-density wave. These spin components are schematically shown as arrows along the c_o , b_o , and a_o axes, respectively.

This important symmetry aspect has been recently highlighted by Tagantsev *et al.* in the study of lattice dynamics of PbZrO_3 [27]. These authors concluded that the antiferroelectric state is a so-called missed incommensurate phase and that the transition to this state is driven by softening of a single polar lattice mode. Due to flexoelectric coupling, the system is expected to be virtually unstable against the incommensurate modulation, as was shown by Axe *et al.* [28]. However, the Umklapp interaction forces the system to go directly to the commensurate lock-in phase, leaving the incommensurate phase as a missed opportunity [27].

This consideration provides a way to deduce the appropriate symmetry of the modulated phase of $\text{Bi}_{0.8}\text{La}_{0.2}\text{Fe}_{0.5}\text{Sc}_{0.5}\text{O}_3$. Our experimental diffraction data indicate the presence of only R - and Σ -type superstructures, which results in a few (3+1) superspace isotropy subgroups to be tested in the refinement procedure [22,23]. A combination of the single- \mathbf{k}_p^Σ , Σ_2 incommensurate modulation with antiphase octahedral tilting (R_4^+ commensurate distortions with the $\mathbf{k}_p^R = (\frac{1}{2}, \frac{1}{2}, \frac{1}{2})$ propagation vector) results in seven distinct superspace subgroups [22,23], but only three of them are consistent with the orthorhombic metric of the pseudocubic perovskite unit cell. The quantitative joint refinement of the x-ray and neutron diffraction patterns confirmed the $Imma(0,0,\gamma)s00$ superspace group to be the adequate one to describe the modulated structure of $\text{Bi}_{0.8}\text{La}_{0.2}\text{Fe}_{0.5}\text{Sc}_{0.5}\text{O}_3$. The corresponding coupled order parameter takes the $(0, \delta, -\delta; \eta, 0, 0, 0, 0, 0, 0, 0, 0, 0, 0)$ direction in the reducible $R_4^+ \oplus \Sigma_2$ representation space. The structure involves incommensurate atomic displacements (predominantly Bi and oxygen) along the $[1\bar{1}0]_p$ pseudocubic direction combined with antiphase octahedral tilting about this axis [Fig. 2(a)]. This structural model is identical to the missed incommensurate phase discussed by Tagantsev *et al.* [27] for the antiferroelectric PbZrO_3 . Earlier, Rusakov *et al.* [19] used the $Imma(0,0,\gamma)s00$ superspace group to propose a structural model for the incommensurate phase of $\text{Bi}_{0.75}\text{La}_{0.25}\text{FeO}_3$. The authors split the Bi position and applied a steplike occupational modulation to model the constant

and correlated shifts of Bi and oxygen atoms along the a_o axis of the average $Imma$ structure. Hereafter we use o subscript to denote the orthorhombic setting (see Table I for the relation between the orthorhombic and cubic settings). In our refinement, the modulation was applied to the atomic displacements. In such an approach, the modulation is a characteristic of the displacive correlation function averaged

TABLE I. Structural parameters of $\text{Bi}_{0.8}\text{La}_{0.2}\text{Fe}_{0.5}\text{Sc}_{0.5}\text{O}_3$ obtained from the joint refinement of room-temperature x-ray and neutron diffraction data using the $Imma(0,0,\gamma)s00$ superspace group with the basis vectors related to the parent cubic $Pm\bar{3}m$ structure as $(1, -1, 0, 0), (0, 0, -2, 0), (1, 1, 0, 0), (0, 0, 0, 1)$ and origin at $(0, 1, 1, 0)$. Unit cell parameters $a_o = 5.6879(1)$ Å, $b_o = 7.9593(1)$ Å, $c_o = 5.7166(1)$ Å, $\mathbf{k}_o^\Delta = \gamma \mathbf{c}_o^* = 0.534(3)\mathbf{c}_o^*$. Reliability factors $R_p = 2.79\%$ and $R_{wp} = 3.25\%$.

Atom	x	y	z	
A_i^1 ^a	A_x^1	A_y^1	A_z^1	
B_i^1 ^a	B_x^1	B_y^1	B_z^1	U_{iso}
Bi/La	0 0.0475(7) -0.033(1)	0.25 0 0	0.5093(4) 0 0	0.024(1)
Fe	0 0 0	0 0 0	0 0 0	0.010(3)
O1	0.25 0.023(1) -0.0043(7)	-0.0444(1) 0 0	0.25 0.012(2) 0	0.037(1)
O2	0 -0.0929(8) -0.005(2)	0.25 0 0	0.0785(4) 0 0	0.01(1)

^a A_i^1 and B_i^1 ($i = x, y, z$) are the Fourier coefficients of the first harmonic ($n = 1$) of the displacive modulation function: $u_{i,j,l}(\mathbf{r}_{j,l} \cdot \mathbf{k}_o^\Delta) = \sum_{n=0}^{\infty} A_{i,j}^n \sin(2\pi n[\mathbf{r}_{j,l} \cdot \mathbf{k}_o^\Delta]) + B_{i,j}^n \cos(2\pi n[\mathbf{r}_{j,l} \cdot \mathbf{k}_o^\Delta])$, where $\mathbf{r}_{j,l}$ indicates the position of the j th atom of the average structure in the l th unit cell.

over the sample volume (Table I). This model is hardly appropriate to analyze the local bond distances and angles but is sufficient to consider the symmetry-controlled physical properties; in particular, a coupling between the orthogonal magnetic modes. It should be pointed out that although the model proposed by Rusakov *et al.* [19] is more adequate to discuss the local crystal chemistry, it is another limited case which ignores the fact that the amplitude of the atomic displacements depends on the local fluctuations of La.

B. Magnetic structure

Magnetization measurements of $\text{Bi}_{0.8}\text{La}_{0.2}\text{Fe}_{0.5}\text{Sc}_{0.5}\text{O}_3$ revealed a weak ferromagnetic behavior below $T_N \sim 220$ K [Fig. 3(a)] with the value of the spontaneous moment of $\sim 0.022\mu_B/\text{Fe}$ [Fig. 3(b)]. This value as well as the critical temperature of the magnetic ordering are close to those in the polar and antipolar polymorphs of $\text{BiFe}_{0.5}\text{Sc}_{0.5}\text{O}_3$ [17]. In agreement with the magnetization data, the neutron diffraction measurements indicate a long-range antiferromagnetic ordering below T_N [Figs. 4(a) and 4(b)]. Note that a precise determination of the critical temperature from the neutron diffraction data is complicated by a superposition of the magnetic Bragg intensity with a diffuse component developing above T_N . The diffuse component is probably related to a magnetic inhomogeneity caused by local fluctuations in the Fe/Sc ratio. The magnetic Bragg reflections, observed below T_N , are resolution limited and can be indexed using the average orthorhombic $Imma$ structure assuming $\mathbf{k}_o^{m\Gamma} = 0$ propagation

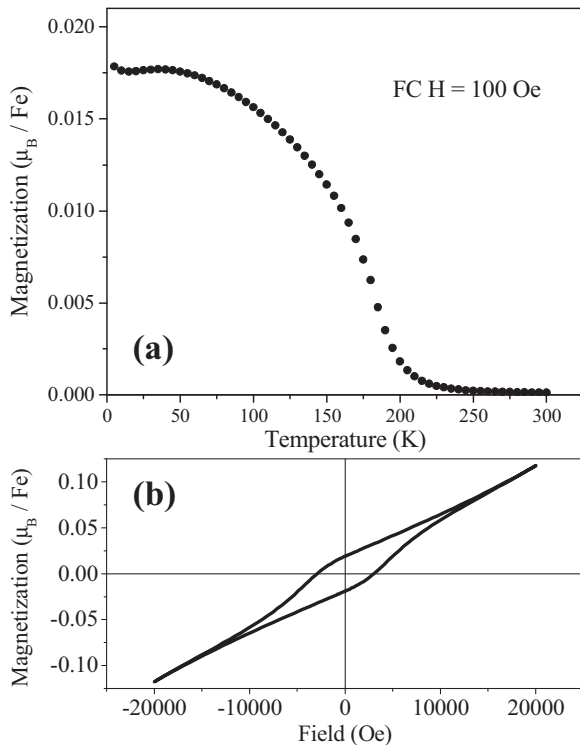


FIG. 3. Magnetization as a function of temperature, measured for $\text{Bi}_{0.8}\text{La}_{0.2}\text{Fe}_{0.5}\text{Sc}_{0.5}\text{O}_3$ under the magnetic field of $H = 100$ Oe after cooling in this field (a). Magnetization loop measured at 5 K after a zero-field cooling (b).

vector. To refine quantitatively the magnetic structure, we classified the magnetic modes according to the time-odd irreducible representations of the $Imma$ space group. The crystal structure based on which the magnetic order emerges is, however, incommensurate [see Fig. 1 and the insets of Fig. 4(c)]. Therefore, one needs to decompose the primary structural modulation in respect of the time-even irreducible representations of $Imma$. The relevant analysis revealed that the incommensurate structural modulation has the symmetry of the Λ_4 representation associated with the $\mathbf{k}_o^\Lambda = (0,0,\gamma)$ line of symmetry [23,23]. Then, by combining the time-odd $\mathbf{k}_o^{m\Gamma} = 0$ representations with the Λ_4 incommensurate order parameter, we deduced the magnetic superspace groups [23,23] and tested them in the refinement versus the neutron diffraction data. The $m\Gamma_4^+ \oplus \Lambda_4$ combination resulting in

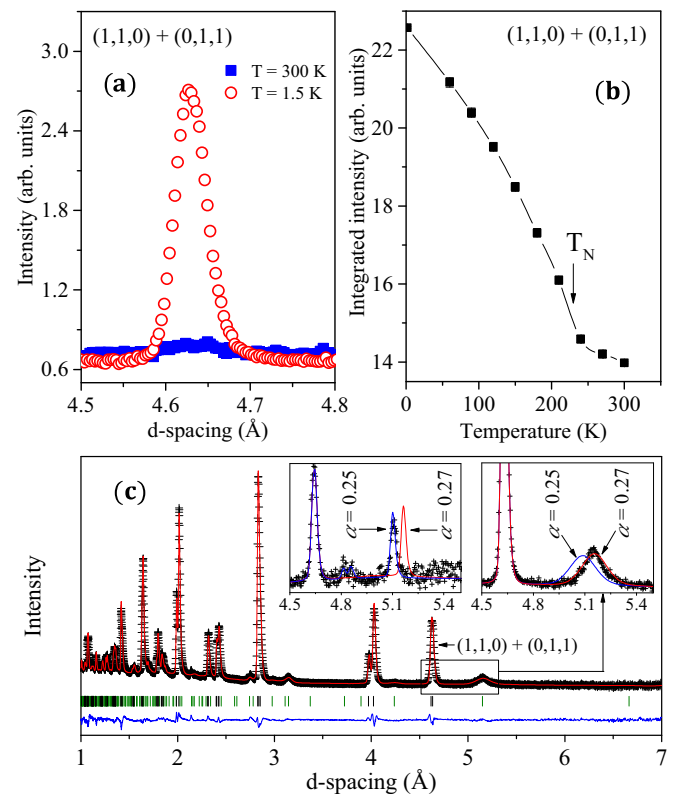


FIG. 4. (Color online) (a) Neutron diffraction patterns of $\text{Bi}_{0.8}\text{La}_{0.2}\text{Fe}_{0.5}\text{Sc}_{0.5}\text{O}_3$ at the vicinity of the strongest magnetic peaks collected above and below T_N . (b) Integrated intensity of the magnetic peaks as a function of temperature (error bars are smaller than the size of the symbol). (c) Rietveld refinement of the neutron diffraction data collected at 1.5 K. The cross symbols and solid line (red [gray]) represent the experimental and calculated in the $Im'ma'(0,0,\gamma)s00$ magnetic superspace group intensities, respectively, and the line below (blue [gray]) is the difference between them. Tick marks indicate the positions of Bragg peaks (green [light gray] for satellites and black for fundamental). Insets show an enlarged part of the diffraction patterns for undoped $\text{BiFe}_{0.5}\text{Sc}_{0.5}\text{O}_3$ (left) and doped $\text{Bi}_{0.8}\text{La}_{0.2}\text{Fe}_{0.5}\text{Sc}_{0.5}\text{O}_3$ (right) compositions, where the strongest structural satellite $(1,0,0)_p - \mathbf{k}_p^\Sigma$ is observed. The solid red and blue (both gray) lines represent intensities calculated for the incommensurate ($\alpha = 0.27$) and commensurate ($\alpha = 0.25$) values of the modulation vector $\mathbf{k}_p^\Sigma = (\alpha, \alpha, 0)$.

the $Im'ma'(0,0,\gamma)s00$ magnetic superspace group was found to provide a uniquely good refinement quality [Fig. 4(c)] [29]. Remarkably, this magnetic superspace group implies a coexistence of both commensurate and incommensurate components of the magnetic order parameter [Fig. 2(b)]. The former is represented by ferromagnetic (F) and G -type antiferromagnetic components along the b_o and c_o axes of the average $Imma$ structure, respectively. The latter is along the a_o axis, with the modulation related to the structural one by the propagation vector conservation law, as will be discussed below. The refinement procedure yielded the statistically significant value for the commensurate antiferromagnetic component only: $3.90(4)\mu_B$ per Fe. This value is somewhat smaller than the expected one, $5\mu_B$, for the $e_g^2t_{2g}^3$ electronic configuration of Fe^{3+} but practically identical to the ordered moment in $Bi_{0.9}La_{0.1}FeO_3$ [16]. The ferromagnetic component in $Bi_{0.8}La_{0.2}Fe_{0.5}Sc_{0.5}O_3$ is clearly evidenced by the magnetization data [Fig. 3(b)] with the value well beyond the capabilities of the unpolarized neutron powder diffraction experiment. Although the presence of the modulated component does not follow directly from the neutron and magnetization data, it can be shown that the system couples it to gain full advantage of the antisymmetric exchange interactions. These interactions are anisotropic and force the direction of the primary G -type antiferromagnetic component to be along the c_o axis.

The Heisenberg symmetric exchange interactions are degenerate in respect of the global spin rotations and therefore the corresponding part of the exchange energy does not depend on the crystallographic direction of the interacting spins. These interactions usually dominate and, in a first approximation, define the relative orientations of spins in a magnetic structure. Then, the higher order anisotropic terms in the magnetic Hamiltonian such as antisymmetric exchange, single ion anisotropy, magnetoelastic coupling, and dipole-dipole interactions remove the global spin rotation degeneracy, making some crystallographic directions preferable. In the $Bi_{0.8}La_{0.2}Fe_{0.5}Sc_{0.5}O_3$ perovskite, the octahedrally coordinated Fe^{3+} ions with a nearly quenched orbital degree of freedom ($L = 0, S = 5/2$) interact antiferromagnetically via the strong superexchange, which results in the G -type magnetic structure as found experimentally and as observed in many other Fe^{3+} -based perovskites [30]. Structural distortions activate the anisotropic terms; in particular, antisymmetric exchange.

As follows from the structure refinement, described in the previous section, there are two primary structural distortions in $Bi_{0.8}La_{0.2}Fe_{0.5}Sc_{0.5}O_3$, namely antiphase octahedral tilting and incommensurately modulated Bi and oxygen displacements. The part of the antisymmetric exchange related to octahedral tilting was considered in detail in Ref. [17]. It has been shown that the axial distortions associated with the octahedral rotations are responsible for the weak ferromagnetic properties of antiferromagnetically ordered perovskites with a G -type spin configuration. The relevant part of the Dzyaloshinskii vector, $\mathbf{D}_{i,j}^{oct}$, is expressed by the antiferroaxial vector, which is a characteristic of the tilting pattern. In other words, the component of the Dzyaloshinskii vector which induces the weak ferromagnetism coincides with the tilting axis of octahedra. One can therefore expect that the spin

components of the primary G -type antiferromagnetic mode are confined within the $(b_o c_o)$ plane, since the octahedra are tilted about the a_o axis in the average $Imma$ structure. This part of the antisymmetric exchange energy, $\mathbf{D}_{i,j}^{oct} \cdot [\mathbf{S}_i \times \mathbf{S}_j]$, is degenerate in respect of the moment direction in the $(b_o c_o)$ plane. This degeneracy is, however, removed when we take into account the antisymmetric exchange imposed by the incommensurate structural distortion.

To demonstrate that, we need to work out the appropriate free-energy coupling terms with respect to the parent $Pm\bar{3}m$ symmetry (see the appendix for details). The incommensurate structural distortion transforms as the twelve-dimensional $\Sigma_2(\eta_{j=1-12})$ irreducible representation associated with the $\mathbf{k}_p^{\Sigma} = (\alpha, \alpha, 0)$ propagation vector of the cubic space group ($\alpha = \frac{\gamma}{2}$). The direction of the order parameter in the Σ_2 representation space is specified by the single nonzero component η_1 . The symmetry properties of the G -type antiferromagnetic mode are defined by the $\mathbf{k}_p^{mR} = (\frac{1}{2}, \frac{1}{2}, \frac{1}{2})$ propagation vector and the three-dimensional representation $mR_4^+(\mu_{i=1-3})$. A combination of these order parameters to a free-energy invariant requires a coupling to a time-odd (magnetic) physical quantity, ξ , with the modulation related to the structural one as $\mathbf{k}_p^{mS} = (\frac{1}{2} - \alpha, \frac{1}{2} - \alpha, \frac{1}{2})$ to maintain the translational invariance. As detailed in the appendix, a third power invariant with a magnetic dipole order parameter can be formed only when the spins in the primary G -type antiferromagnetic mode are along the orthorhombic c_o axis ($\mu_1 = 0, \mu_2 = \mu_3 \neq 0$). The relevant energy term is

$$\mu_2 \eta_1 \xi_{10} + \mu_3 \eta_1 \xi_{10} \equiv 2\mu \eta \xi, \quad (1)$$

which describes a coupling of the spin density wave with the spin components being along the a_o axis of the average $Imma$ structure [Fig. 2(b)]. The presence of this incommensurately modulated spin component is in full agreement with the magnetic $Im'ma'(0,0,\gamma)s00$ superspace symmetry derived above. In the framework of the representation theory, the symmetry properties of the spin density wave are specified by the twelve-dimensional time-odd irreducible representation $mS_3(\xi_{i=1-12})$ with the single nonzero component of the order parameter ξ_{10} . The crucial point is that there is no such coupling, if the spins in the antiferromagnetic configuration are along the b_o axis ($\mu_1 \neq 0, \mu_2 = \mu_3 = 0$). Thus, the system chooses the c_o axis for the spins direction in the primary antiferromagnetic G mode to activate the energy term specified by expression (1), which breaks the degeneracy between the b_o and c_o axes.

The free-energy term specified by expression (1) is not invariant under a global spin rotation (it vanishes when the spins are along the orthorhombic b_o axis) revealing its relativistic nature [31]. This invariant implies that the incommensurate atomic displacements modulate the relevant component of the Dzyaloshinskii vector which in turn induces the spin density wave through the relativistic antisymmetric exchange.

Thus, the magnetic structure of $Bi_{0.8}La_{0.2}Fe_{0.5}Sc_{0.5}O_3$ can be fully understood by taking into account only the isotropic symmetric and anisotropic antisymmetric exchange interactions. The first type of interactions defines the primary G -type antiferromagnetic configuration through the strong

180° superexchange expected for the half-occupied e_g orbitals of Fe^{3+} . The second (anisotropic) type of interactions chooses the c_o axis for the spin's direction in the primary mode to fully exploit the dominant structural distortions and couple the secondary orthogonal ferromagnetic and incommensurate spin components.

IV. CONCLUSIONS

A 20% substitution of Bi with La in the $\text{Bi}_{1-x}\text{La}_x\text{Fe}_{0.5}\text{Sc}_{0.5}\text{O}_3$ system synthesized under high-pressure and high-temperature conditions induces incommensurately modulated structural phase. A quantitative structure refinement using available x-ray and neutron diffraction data indicates that the symmetry of this phase is described by the $\text{Imma}(0,0,\gamma)s00$ superspace group ($\gamma = 0.534(3)$) with modulated displacements of Bi/La and oxygen ions. The structure combines the same type of primary distortions, as the prototype antiferroelectric structure of PbZrO_3 . The difference between the two structures is in the value of the propagation vector for the antipolar displacements (Σ_2 distortive mode) which is commensurate ($\gamma = 0.5$) in the case of PbZrO_3 . Both propagation vectors (commensurate and incommensurate), however, belong to the same line of symmetry and therefore the commensurate value (lock-in phase) is not stimulated by the symmetry and can be tuned by composition or external perturbations such as pressure, strain (for thin-film forms), and electric field.

Below $T_N \sim 220$ K, a long-range antiferromagnetic ordering commensurate with the average Imma structure takes place, as revealed by the neutron diffraction data. The spins are aligned along the c_o axis, which allows the system to gain energy from the antisymmetric exchange activated by the two primary structural distortions: namely, octahedral tilting and the incommensurate atomic displacements. The antisymmetric exchange imposed by the tilting induces a weak ferromagnetic component along the b_o axis, whose presence was confirmed by magnetization measurements. The part of the antisymmetric exchange related to the modulated atomic displacements with $\mathbf{k}_p^\Sigma = (\alpha, \alpha, 0)$ is dictated by the symmetry to couple a spin-density wave with the propagation vector $\mathbf{k}_p^{mS} = (\frac{1}{2} - \alpha, \frac{1}{2} - \alpha, \frac{1}{2})$ and the spin components being along the a_o axis. The spin density wave is, however, too small to be detected in the present powder neutron diffraction experiment and requires more precise single-crystal measurements. These results demonstrate the crucial role of the antisymmetric exchange in magnetic properties of Fe^{3+} -containing distorted perovskites.

ACKNOWLEDGMENTS

This work was supported by project TUMOCS. This project has received funding from the European Union's Horizon 2020 research and innovation programme under the Marie Skłodowska-Curie grant agreement No. 645660.

APPENDIX

To explore the Landau free-energy terms activated by the incommensurate structural modulation, let us define

the transformational properties of the distortions involved with respect to the parent $Pm\bar{3}m$ symmetry. In this cubic structure, Bi/La, Fe/Sc, and oxygen atoms occupy $1b(\frac{1}{2}, \frac{1}{2}, \frac{1}{2})$, $1a(0,0,0)$, and $3d(\frac{1}{2}, 0, 0)$ Wyckoff positions, respectively. The structural modulation and the G -type spin configuration transform as the twelve-dimensional time-even $\Sigma_2(\eta_1, \eta_2, \eta_3, \eta_4, \eta_5, \eta_6, \eta_7, \eta_8, \eta_9, \eta_{10}, \eta_{11}, \eta_{12})$, $\{\mathbf{k}_p^\Sigma = (\alpha, \alpha, 0)\}$ and the three-dimensional time-odd $mR_4^+(\mu_1, \mu_2, \mu_3)$, $\{\mathbf{k}_p^{mR} = (\frac{1}{2}, \frac{1}{2}, \frac{1}{2})\}$ irreducible representations of the cubic space group ($\{\}$ indicates a wave vector star with a representative arm enclosed) [22,23]. The lowest degree coupling term maintaining the time reversal symmetry is a cubic trilinear invariant of the $\sum_{i,j,l} \mu_i \eta_j \xi_l$ type. Here, ξ_l denotes the coupled time-odd order parameter whose symmetry we need to figure out for the cases when the magnetic moments are along the orthorhombic b_o (pseudocubic $[001]_p$) and c_o (pseudocubic $[110]_p$) axes. These spin configurations occur when the mR_4^+ order parameter takes the $(\mu_1, 0, 0)$ and $(0, \mu_2, \mu_3; \mu_2 = \mu_3)$ directions, respectively. The incommensurate atomic displacements along the $[1\bar{1}0]_p$ pseudocubic direction (orthorhombic a_o axis) are described by the $(\eta_1, 0, 0, 0, 0, 0, 0, 0, 0, 0, 0, 0)$ order parameter in the Σ_2 representation space. The translation symmetry requires the ξ quantity to be associated with the $\{\mathbf{k}_p^{mS} = (\frac{1}{2} - \alpha, \frac{1}{2} - \alpha, \frac{1}{2})\}$ propagation vector star (S line of symmetry), where $\alpha = \gamma/2$ is the wave number of the structural modulation. This comes directly from the trilinear form of the invariant, which requires the product of the Fourier transforms $e^{-2\pi i(\mathbf{k}_p^\Sigma \cdot \mathbf{t})}$ and $e^{2\pi i(\mathbf{k}_p^{mS} \cdot \mathbf{t})}$ associated with the η_j and ξ_l order parameters to change sign at the $\mathbf{t}_{p1} = (1, 0, 0)$, $\mathbf{t}_{p2} = (1, 0, 0)$, and $\mathbf{t}_{p3} = (1, 0, 0)$ translations. There are four twelve-dimensional irreducible representations, $mS_{v=1-4}(\xi_1, \xi_2, \xi_3, \xi_4, \xi_5, \xi_6, \xi_7, \xi_8, \xi_9, \xi_{10}, \xi_{11}, \xi_{12})$, associated with the $\{\mathbf{k}_p^{mS}\}$ star, but only three of them appear in the decomposition of the pseudovector (magnetic) reducible representation localized on the Fe $1b$ Wyckoff position:

$$\Gamma_{mag}(1b) = mS_2 \oplus mS_3 \oplus mS_4 \quad (\text{A1})$$

Using the ISOTROPY software (irrep version 2011) [22,23], one can derive that the order parameter with the mS_1 symmetry is coupled to the $mR_4^+ \otimes \Sigma_2$ product through the general free-energy invariant of the form:

$$\begin{aligned} & \mu_1 \eta_1 \xi_9 - \mu_1 \eta_2 \xi_{10} - \mu_1 \eta_3 \xi_{11} + \mu_1 \eta_4 \xi_{12} \\ & + \mu_2 \eta_9 \xi_5 - \mu_2 \eta_{10} \xi_6 - \mu_2 \eta_{11} \xi_7 + \mu_2 \eta_{12} \xi_8 \\ & + \mu_3 \eta_5 \xi_1 - \mu_3 \eta_6 \xi_2 - \mu_3 \eta_7 \xi_3 + \mu_3 \eta_8 \xi_4, \end{aligned} \quad (\text{A2})$$

which is reduced down to the simple $\mu_1 \eta_1 \xi_9$ term for the relevant direction of the Σ_2 order parameter. This term describes the allowed coupling scheme for the case of the G -type spin configuration with the moments being along the orthorhombic b_o axis (pseudocubic $[001]_p$). The mS_1 irreducible representation, however, does not enter into the decomposition of the reducible pseudovector representation on the Fe Wyckoff position [zero subduction frequency, see expression (A1)]. This means that there are not any dipole magnetic modes localized on the Fe site with the symmetry of the mS_1 representation and therefore the system cannot activate the antisymmetric exchange through this type of the trilinear invariant.

The situation is different when the coupled order parameter ξ_l transforms as the mS_3 irreducible representation. The general coupling invariant takes the form

$$\begin{aligned} & \mu_1\eta_5\xi_2 + \mu_1\eta_6\xi_1 - \mu_1\eta_7\xi_4 - \mu_1\eta_8\xi_3 \\ & + \mu_1\eta_9\xi_6 + \mu_1\eta_{10}\xi_5 - \mu_1\eta_{11}\xi_8 - \mu_1\eta_{12}\xi_7 \\ & + \mu_2\eta_1\xi_{10} + \mu_2\eta_2\xi_9 + \mu_2\eta_3\xi_{12} + \mu_2\eta_4\xi_{11} \\ & + \mu_2\eta_5\xi_2 + \mu_2\eta_6\xi_1 + \mu_2\eta_7\xi_4 + \mu_2\eta_8\xi_3 \\ & + \mu_3\eta_1\xi_{10} + \mu_3\eta_2\xi_9 - \mu_3\eta_3\xi_{12} - \mu_3\eta_4\xi_{11} \\ & + \mu_3\eta_9\xi_6 + \mu_3\eta_{10}\xi_5 + \mu_3\eta_{11}\xi_8 + \mu_3\eta_{12}\xi_7 \quad (A3) \end{aligned}$$

with the nonvanishing terms $\mu_2\eta_1\xi_{10} + \mu_3\eta_1\xi_{10}$ for the $(\eta_1, 0, 0, 0, 0, 0, 0, 0, 0, 0, 0, 0)$ direction describing the incommensurate structural modulation. These terms are activated

when the spins of the primary G -type antiferromagnetic configuration are along the orthorhombic c_o axis (pseudocubic $[110]_p$). The subduction frequency of the mS_3 representation is nonzero for the $1b$ pseudovector reducible representation (A1) and the projection operator yields the spin density wave localized on the Fe site with the spin direction along the orthorhombic a_o axis (pseudocubic $[1\bar{1}0]_p$) [Fig. 2(b)].

Finally, let us point out, for completeness, that the magnetic order parameter transforming as the mS_2 irreducible representation does not form a third power invariant with the $mR_4^+ \otimes \Sigma_2$ product. The mS_4 representation does form such invariant and provides coupling, when the spins, in the primary G -type configuration, are along the orthorhombic a_o axis. The latter situation is, however, unfavorable for the part of the antisymmetric exchange associated with the octahedral tilting, as discussed in the main text.

-
- [1] G. Catalan and J. F. Scott, *Adv. Mater.* **21**, 2463 (2009).
- [2] A. P. Pyatakov and A. K. Zvezdin, *Phys. Usp.* **55**, 557 (2012).
- [3] Y. Shimakawa, M. Azuma, and N. Ichikawa, *Materials* **4**, 153 (2009).
- [4] M. Azuma, K. Takata, T. Saito, S. Ishiwata, Y. Shimakawa, and M. Takano, *J. Am. Chem. Soc.* **127**, 8889 (2005).
- [5] V. A. Khomchenko, D. A. Kiselev, M. Kopcewicz, M. Maglione, V. V. Shvartsman, P. Borisov, W. Kleemann, A. M. L. Lopes, Y. G. Pogorelov, J. P. Araujo, R. M. Rubinger, N. A. Sobolev, J. M. Vieira, and A. L. Kholkin, *J. Magn. Magn. Mater.* **321**, 1692 (2009).
- [6] V. A. Khomchenko, D. A. Kiselev, I. K. Bdikin, V. V. Shvartsman, P. Borisov, W. Kleemann, J. M. Vieira, and A. L. Kholkin, *Appl. Phys. Lett.* **93**, 262905 (2008).
- [7] S. Karimi, I. M. Reaney, I. Levin, and I. Sterianou, *Appl. Phys. Lett.* **94**, 112903 (2009).
- [8] I. Levin, M. G. Tucker, H. Wu, V. Provenzano, C. L. Dennis, S. Karimi, T. Comyn, T. Stevenson, R. I. Smith, and I. M. Reaney, *Chem. Mater.* **23**, 2166 (2011).
- [9] I. O. Troyanchuk, D. V. Karpinsky, M. V. Bushinsky, V. A. Khomchenko, G. N. Kakazei, J. P. Araujo, M. Tovar, V. Sikolenko, V. Efimov, and A. L. Kholkin, *Phys. Rev. B* **83**, 054109 (2011).
- [10] I. O. Troyanchuk, D. V. Karpinsky, M. V. Bushinsky, O. S. Mantyskaya, N. V. Tereshko, and V. N. Shut, *J. Am. Ceram. Soc.* **94**, 4502 (2011).
- [11] D. V. Karpinsky, I. O. Troyanchuk, J. V. Vidal, N. A. Sobolev, and A. L. Kholkin, *Solid State Commun.* **151**, 536 (2011).
- [12] A. A. Belik, A. M. Abakumov, A. A. Tsirlin, J. Hadermann, J. Kim, G. Van Tendeloo, and E. Takayama-Muromachi, *Chem. Mater.* **23**, 4505 (2011).
- [13] D. P. Kozlenko, A. A. Belik, A. V. Belushkin, E. V. Lukin, W. G. Marshall, B. N. Savenko, and E. Takayama-Muromachi, *Phys. Rev. B* **84**, 094108 (2011).
- [14] S. Prosandeev, D. Wang, W. Ren, J. Iniguez, and L. Bellaiche, *Adv. Funct. Mater.* **23**, 234 (2013).
- [15] A. A. Belik, H. Yusa, N. Hirao, Y. Ohishi, and E. Takayama-Muromachi, *Chem. Mater.* **21**, 3400 (2009).
- [16] C. S. Knee, M. G. Tucker, P. Manuel, S. Cai, J. Bielecki, L. Börjesson, and S. G. Eriksson, *Chem. Mater.* **26**, 1180 (2014).
- [17] D. D. Khalyavin, A. N. Salak, N. M. Olekhovich, A. V. Pushkarev, Yu. V. Radyush, P. Manuel, I. P. Raevski, M. L. Zheludkevich, and M. G. S. Ferreira, *Phys. Rev. B* **89**, 174414 (2014).
- [18] S. A. Prosandeev, D. D. Khalyavin, I. P. Raevski, A. N. Salak, N. M. Olekhovich, A. V. Pushkarev, and Yu. V. Radyush, *Phys. Rev. B* **90**, 054110 (2014).
- [19] D. A. Rusakov, A. M. Abakumov, K. Yamaura, A. A. Belik, G. Van Tendeloo, and E. Takayama-Muromachi, *Chem. Mater.* **23**, 285 (2011).
- [20] L. C. Chapon, P. Manuel, P. G. Radaelli, C. Benson, L. Perrott, S. Ansell, N. J. Rhodes, D. Raspino, D. Duxbury, E. Spill, and J. Norris, *Neutron News* **22**, 22 (2011).
- [21] V. Petříček, M. Dušek, and L. Palatinus, *Z. Kristallogr.* **229**, 345 (2014).
- [22] H. T. Stokes, D. M. Hatch, and B. J. Campbell, ISOTROPY Software Suite [<http://iso.byu.edu>].
- [23] B. J. Campbell, H. T. Stokes, D. E. Tanner, and D. M. Hatch, *J. Appl. Crystallogr.* **39**, 607 (2006).
- [24] M. I. Aroyo, A. Kirov, C. Capillas, J. M. Perez-Mato, and H. Wondratschek, *Acta Crystallogr. Sect. A* **62**, 115 (2006).
- [25] J. M. Perez-Mato, S. V. Gallego, E. S. Tasci, L. Elcoro, G. de la Flor, and M. I. Aroyo, *Annu. Rev. Mater. Res.* **45**, 217 (2015).
- [26] D. D. Khalyavin, A. N. Salak, N. P. Vyshatko, A. B. Lopes, N. M. Olekhovich, A. V. Pushkarev, I. I. Maroz, and Yu. V. Radyush, *Chem. Mater.* **18**, 5104 (2006).
- [27] A. K. Tagantsev, K. Vaideeswaran, S. B. Vakhrushev, A. V. Filimonov, R. G. Burkovsky, A. Shaganov, D. Andronikova, A. I. Rudskoy, A. Q. R. Baron, H. Uchiyama, D. Chernyshov, A. Bosak, Z. Ujma, K. Roleder, A. Majchrowski, J.-H. Ko, and N. Setter, *Nat. Commun.* **4**, 2229 (2013).
- [28] J. D. Axe, J. Harada, and G. Shirane, *Phys. Rev. B* **1**, 1227 (1970).
- [29] The next two best solutions for the magnetic structure, specified by the $Im'm'a(00\gamma)s00$ and $Imma(00\gamma)s00$ magnetic superspace groups, yield essentially worse fitting quality; $R_p = 3.78\%$ and $R_p = 3.91\%$, respectively, vs $R_p = 2.93\%$ in $Im'ma'(00\gamma)s00$.
- [30] Yu. A. Izumov, V. E. Naish, and R. P. Ozerov, *Neutron Diffraction of Magnetic Materials* (Consulting Bureau, New York, 1991).
- [31] I. E. Dzyaloshinskii, *Sov. Phys. JETP* **19**, 960 (1964).